



DEEP ECHO

DEEP ECHO is a futuristic Sci-Fi/Drama film set in the bottom of the Atlantic ocean, where the lines of time and space are broken to discover a message destined to save us all.

Confidentiality Notice

This document and the information contained herein, is provided solely for the purpose of acquainting the reader with “DEEP ECHO” Feature Film and Kepler 22 Group LLC. It is proprietary information to the company. By accepting this document, the recipient agrees to keep the contents in strictest confidence and not to reproduce or further distribute it without the express written consent of an officer of Kepler 22 Group LLC.

Film Investment Risks

Any investment in film production involves a high degree of risk. This investment should not be made by anyone who cannot afford the loss of his or her entire investment. Before investments are made, the following risks must be carefully considered:

- a) The success of any medium, whether film or TV, depends on the public’s tastes and opinions at any given time. The likes and dislikes of the public vary greatly from day to day and can never be confirmed. As a result, it is impossible to determine the success of this, or any, film.
- b) The release of a similar film may affect the popularity of this film.
- c) As a result of the above factors, and others not listed here, only one of every five films made recoup their cost.

For the interest of the Limited Liability Company, the investors realize they may not dispose of their investment at any time and that they bear the financial risk of their investment for an indefinite period.

TABLE OF CONTENTS

Executive Summary	04
Investment Opportunity.....	05
The Company	09
The Industry.....	14
The Market.....	15
Distribution Strategy	15
The Project	16
Comparables.....	21
Contact.....	22



Go deep and you will resurface...

Executive summary

Logline: *A passionate scientist investigates the ruins of a mysterious pyramid hidden in the bottom of the ocean, but gets trapped in her flooded artificial intelligence capsule, where trying to survive, she makes the greatest of human discoveries.*

Directed by: Jon Turteltaub– (Proposed) The Meg , National Treasure, National Treasure: Book of Secrets, The Sorcerer's Apprentice, Disney's The Kid.

Produced by: Kepler 22 Group LLC in association with (Proposed / TBD - in conversations with)

Starring: Nicolas Cage & Donnie Yen (Proposed)

Country of Origin: United States

Duration: 100 minutes approximately

Genre: Sci-Fi drama

Language(s) English

Comparables: Interstellar / The Abyss / Gravity / Everything Everywhere All At Once

Shooting Locations: USA, Spain, Malaysia, Greece, or Nevada USA, tentatively

Budget: \$10,000,000.00 tentatively.

Project Stage:

- Script completed.
- Option agreement renewed.
- A list actor interested and supporting talent with submitted LOI (Letter of Intention).
- Tax incentives (between 35% and 50%) pre-selected and in conversation.
- Brand integration deals pre-set
- In kind services pre-set

Timeline:

- Pre-Production: Tentatively July 2023
- Shooting: Date: February 2024
- Postproduction Date: April 2024
- Completion Date: December 2024

Investment Opportunity: Return of incentive rebate percentage prior to filming and 50% of distribution receipts .

DEEP ECHO LLC INVESTMENT PARTNER EXECUTIVE SUMMARY

Business Description: We develop and produce **DEEP ECHO, a global-wide audience**, studio released motion picture scheduled to premiere in theaters by the end of 2024. Investor returns come in two trenches: first, 110% of the investment, forecasted to occur during the last quarter of 2024 and paid from distribution receipts and tax rebates refund; then from 50% of the company's global net profits from the picture, and licensing of games, music, brand tie-ins and all other sources, forecasted to begin in the last half of 2025.

Partner Investment is from \$500,000.00 up to \$11,000,000.00. It provides 100% of DEEP ECHO's development capital inclusive of retaining its studio level director and actors, securing global distribution and marketing relationships, professional fees and overhead.

Investor 110% Return from Production and 50% of Company's Profits: Investors receive a 110% (i. e. \$550,000.00-\$11,000,000.00) return from DEEP ECHO's production budget. Investors also receive 50% of all the Company's profits which are derived from 50% of all DEEP ECHO's distribution receipts.

Investor Other Benefits: Partners may join the producers during production, receive a screen credit, and have their own **benefit** premieres just prior to DEEP ECHO's release.

Investor 110% Return Plus 50% Profit Share Timeline

MONTH 01 – DEVELOPMENT BEGINS

- An established minimum of \$500K - \$2M in funding completed before beginning.
- When \$2M in funding is raised
 - ❖ Use of funds:
 - Director / Actor Attachments (Pay to Play)
 - Marketing / Legal / Overhead
 - Co-Production company deal set
 - Completion Bond set



MONTH 06 – DOMESTIC AND GLOBAL DISTRIBUTION SET UP

- Brand Integration Deal set
- Brand Integration completed.
- Studio approved Director and Actors completely attached
- Localities Tax Incentives Certificates set
- Management retainers



MONTH 11 – PRODUCTION BEGINS

- Production funds available.
- Sale of Tax Incentives Certificates to banks before filming begins. i. e. 20% tax rebate refund to investor based on points purchased.



MONTH 24 – GLOBAL FILM RELEASE

- Theatrical, streaming, television, music, and all rights within their respective release window.
- Investor receives half of the company's share.



MONTH 35 – EARNINGS ESTIMATES DURING THE FIRST 5 YEARS.

- Investors get 50% of company profits from all revenue sources.
- Investors receive reports and earnings payments.



THE ACCURACY OF TIMES AND AMOUNTS IN THIS REPORT ARE FORECASTED AND MAY VARY.

How am I financing DEEP ECHO:

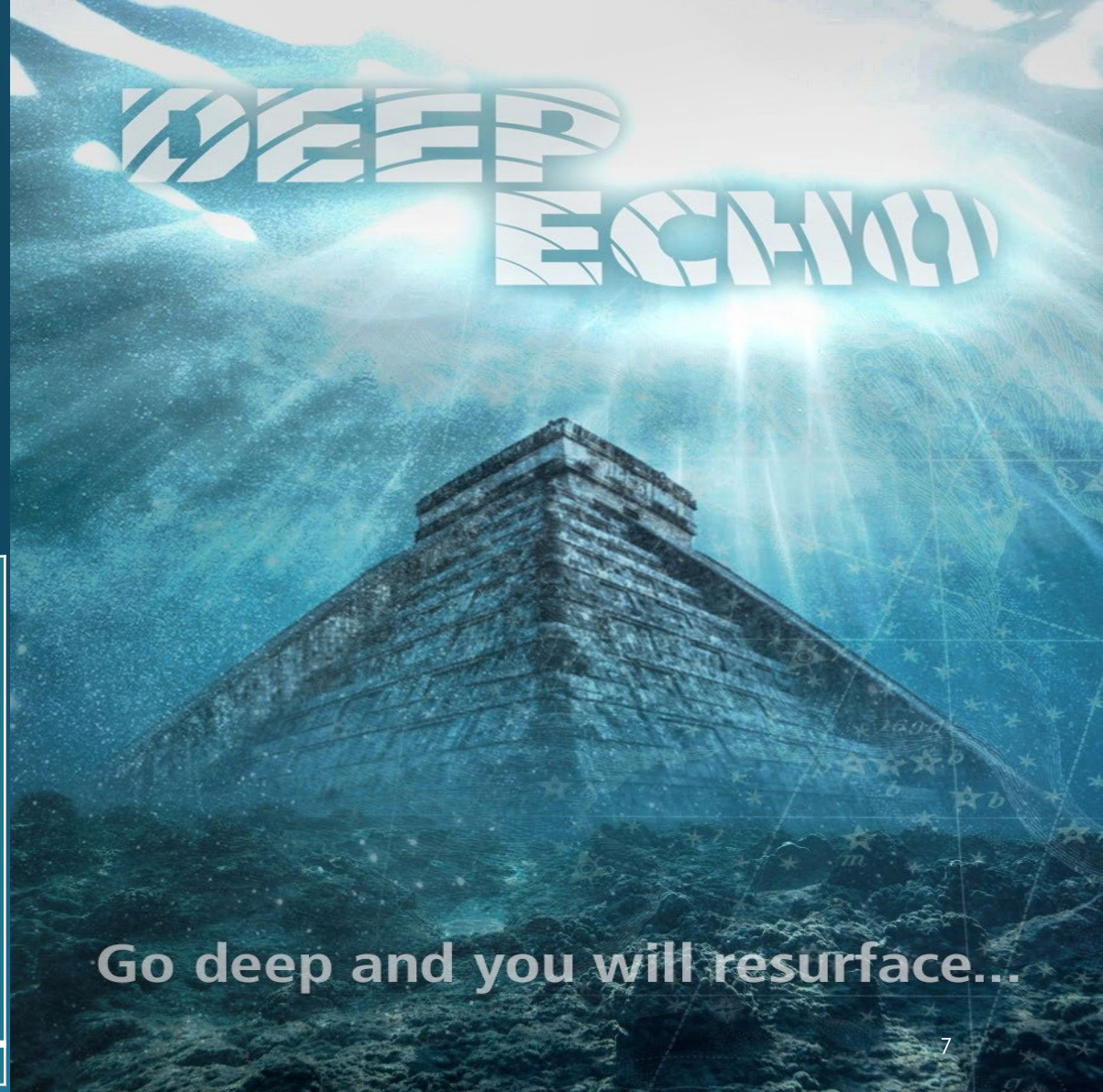
At the end of the development phase, we approach a production partner. At the beginning of most movies, you see the names of several production companies; those are the partners involved. We also secure distribution, for the main nine (9) territories globally, secure brand tie-ins, production incentives from localities where we are filming, and a completion bond (insurance to complete and deliver the film). All this together acts as collateral for the financing of the production costs. Once brand tie-ins are deposited and tax incentive certificates are acquired, our investors get paid their points purchased. Then, they get their 50% of the company's net profits around 6 months after the film is released.

Soft Money (Tentatively)

- Brand Integration \$7,000,000.00
- Localities Tax Incentives \$4,000,000.00
- In Kind Services \$600,000.00

Hard Money (Tentatively)

- Distribution Minimum Guarantee \$2,000,000.00
- Equity
 - Private Capital \$10,000,000.00



BUDGET [link to PDF will be here](#)

WATERFALL

1. Buyer License fee/MG
2. Distributors fees/wire transfer fees.
3. Sales Agents Commission (20-35%)
4. Sales Agent's Recoupable Expenses (up to cap)
5. Producer's Representative Fees (If applicable, 5-15%)
6. Production Company fees
 1. Debt (If applicable)
 2. Equity Investor
(Until recoupment+10-15%, then 50% of future profits)
 1. Crew Deferrals
 2. Producer share



**DEEP
ECHO**



Go deep and you will resurface...

DEEP ECHO

Kepler 22 Group's mission is to make films that are sustainable, with a positive impact, and that enhances audiences' consciousness powerfully.

KEPLER 22 GROUP LLC

DEEP ECHO COMPANY STRUCTURE

The company will create an LLC for the film investment with the investors signed as limited members. Most likely with one representative of the investors and one representative of Kepler 22 Group being appointed as joint managers. The investment vehicle will be a Private Placement Memorandum conforming to the laws of Regulation of the Securities Act. The LLC will retain independent Legal and Accounting services from which costs will be shared equally among the film partners.

DEEP ECHO PRODUCTION CREW



Magi Avila

Director and producer of the multi-award-winning Documentary *Altitude Not Attitude*, which garnered awards for Best Feature Documentary and Best Director of an Inspirational Film. It is a finalist at the IDA and the Academy Award Qualifying Flickers Rhode Island, among 20 more Film Festivals. She is co-producer of Mark Burman's *Ambush*, with Aaron Eckhart. Avila recently became "Best Director" awardee at 6 film festivals (and counting) with her Pilot TV series "Street Living" AKA "Street Lyfe".

Her most recent work as an actress can be seen in the TV Series *My American Family*, featuring Danny Trejo. She has also acted with Bruce Willis in *First Kill*, with Nicolas Cage in *Dog Eat Dog*, in *A Better Life* with Demian Bichir, the TV Series *Training Day* with the late Bill Paxton, and "The Shield" with Michael Chiklis. She came from Mexico, after an extensive career in film, theater, TV news hosting and opera performances.

Producer [IMDB](#)

Jon Turteltaub



He has directed successful mainstream films for the Walt Disney Studios, including; *3 Ninjas* (1992), *Cool Runnings* (1993), *While You Were Sleeping* (1995), *Phenomenon* (1996), *Instinct* (1999), Disney's *The Kid* (2000), *National Treasure* (2004), as well as its 2007 sequel *National Treasure: Book of Secrets*, and *The Sorcerer's Apprentice* (2010), as well as *The Meg* (2018) for Warner Brothers.

its reputation grew - and Scott's with it - as one of the most important sci-fi movies ever made. Scott's next major project was back in the advertising world, where he created another of the most talked-about advertising spots in broadcast history when his "1984"-inspired ad for the new Apple Macintosh computer was aired during the Super Bowl on January 22, 1984. He has many more successes like "Thelma & Louise," "Gladiator," and "Black Hawk Down."

Director / In Consideration [IMDB](#)

DEEP ECHO PRODUCTION CREW



Frank is a Producer, Line Producer, and UPM local to Los Angeles with over 15 years experience in film and television production. He has worked for companies such as showtime, Hulu, BET, Tubi, as well as independent films such as Star trek Renegades, Six Gun Savior, Redville.

Frank Zanca [IMDB](#)
Unit Production Manager

An award-winning screenwriter and story analyst internationally recognized for his scholarly approach to the concept of myth as the origin of storytelling. His writing blends the intellectual, psychological, and philosophical aspects of the craft with commercial storytelling through modern mediums. "He was born on a Thursday."



Chris Kühne [IMDB](#)

Writer

Sara Spring [IMDB](#)
Line Producer/ In Consideration

Queen & Slim, Teenage Mutant Ninja Turtles, Anchorman 2: The Legend Continues, The Dictator, The Adventures of Tintin, True Grit, The Curious Case of Benjamin Button, SEAL Team, Warrior Nun

Variety's Jon Burlingame calls her music "one of the most remarkable scores of the past season," As a conductor, Leanna Primiani's credits include the National Symphony and LA Opera. She is the winner of the 2020 Toulmin Commission. She has worked with the Nashville Symphony, Cabrillo Music Festival, and composed the score of *The Bad Seed*, directed by and starring Rob Lowe.



Leanna Primiani [IMDB](#)

Film Composer / In Consideration

Robert M. Bouffard [IMDB](#)
Art Director-Prop Fabricator

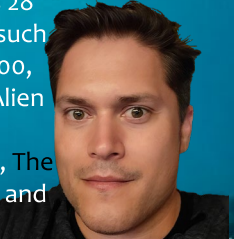
He is reknown Art Director who started working with **Roger Corman in 1980's** and has since worked on large studios films such as Transformers, Startwars: The Force Awakens and TV Shows such as Lost.



Gary Tomchuk - Consultant

Gary brings impact film and business together as the founder of Transformational Media. Founder/CEO of Aware Cinema, a marketing and distribution platform for films for social change. He was also co-founder of Global Film Ventures, bringing Silicon Valley practices to the independent film world. As CEO of Ethical Markets Media, he launched the first national weekly TV series on socially responsible business to over 44 million homes. Executive Director of the Association of Transformational Media Artists, Media, Entertainment, Technology, Arts (META) Global Alliance for Transformational Entertainment (GATE

Chris began his career in visual effects 28 years ago. He has worked on projects such as Blonde, The Day After Tomorrow, 300, Fantastic 4: Rise of The Silver Surfer, Alien vs Predator: Requiem. He is the VFX supervisor of movies such The A-Team, The Day After Tomorrow, Looper, Jumper, and Captain America: The First Avenger.



Chris Wells [IMDB](#)

VFX Supervisor



Louie Psihoyos
Consultant
Producer. [IMDB](#)

Won 1 Oscar
22 wins & 11 nominations total as director and producer, known for Racing Extinction (2015), Mission: Joy - Finding Happiness in Troubled Times (2021) and The Cove (2009). Co-Founder of Oceaninc Preservation Society

DEEP ECHO



Lisa Callif is a partner at the entertainment law firm, Donaldson + Callif, LLP. She was named as a Hollywood Reporter Power Lawyer in 2016 by the Daily Journal as one of the Top 100 Women Lawyers in 2014 and 2016 and by Variety as one of The Best and The Brightest in 2011. Her primary focus is on representing independent filmmakers in all aspects of creating a project; including development, production and distribution. Lisa has rendered legal services on such films as *20 Feet From Stardom* (2014 Academy Award and Film Independent Spirit Award Winner), *Invisible War* (2012 Film Independent Spirit Award Winner and Grand Jury Prize, Best Documentary, Sundance), *Inside Job* (2011 Academy Award winner), *Insidious* (from the producers of *Paranormal Activity*), *How to Die In Oregon* (2011 Grand Jury Prize, Best Documentary, Sundance), *I'm Still Here* (starring Joaquin Phoenix, 2010), *Waiting for Superman* (2010), and *The Most Dangerous Man in America: Daniel Ellsberg and the Pentagon Papers* (2010 Academy Award nominee).



Michael C. Donaldson (born October 13, 1939) is an American entertainment attorney, independent film advocate and a recipient of the International Documentary Association's Amicus Award,^[1] an honor bestowed upon only two others, Steven Spielberg and John Hendricks, in the 25-year history of the awards.^[2] He is a proponent of the 165-year-old fair-use doctrine and, through its use, is known for saving documentarians hundreds of thousands of dollars while preserving their First Amendment rights. In addition to serving as general counsel to Film Independent (home of the Independent Spirit Awards and the Los Angeles Film Festival) and the Writers Guild of America/West Foundation.



Jonathan is an entertainment attorney currently working at Donaldson + Callif, LLP. Jonathan works in all aspects of the firm's practice, including representing filmmakers and media companies through the various stages of production including development, rights acquisition, clearance, and distribution. Prior to joining the firm, Jonathan was in-house counsel at Beachbody (the world's largest at-home fitness company), where he was responsible for all aspects of production for their premium digital content. This included the development and execution of fully involved requirements for new productions and negotiating partnership deals with large technology vendors for their streaming platform (VOD, SaaS, Cloud, and IT service agreements).

DEEP ECHO

THE INDUSTRY

Global Industry

The global film and video market grew from \$244.43 billion in 2021 to \$272.21 billion in 2022 at a compound annual growth rate (CAGR) of 11.4%. The audience will forever prefer to watch on the big screens films as DEEP ECHO which possesses the enormous sense of wonder and beauty that our brains crave.

USA Industry

The U.S. movie industry is worth \$95.45 billion as of 2022. Surprisingly, the movie industry continued to grow slowly throughout the pandemic. The industry is expected to have a CAGR of 4.1% from 2022 to 2027.

DEEP ECHO

The market

We believe our Sci-Fi drama will target an adult audience ages 18-55. According to the MPA the 25-39 years old age demographic (17 million) has the most frequent movie-goers followed by the 40-52 years old demographic (26 millions). New York Times, LA Times, Wall Street Journal are talking about how content is getting smarter and therefore science fiction genre is becoming more popular.

Distribution Strategy

The motion picture industry is highly competitive with a significant portion of a film's success relating to the skills of its marketing strategy. Kepler 22 Group, LLC intends to capitalize on various theatrical, Streaming, VOD, Airlines, Hotels, Military Bases, and all distribution channels, including submitting DEEP ECHO to the most prestigious and successful annual film festival awards. We are in conversations with distributors and awaiting their distribution contracts. This strategy will maximize the Company's bargaining power and increase the potential profit the film may earn. The typical revenue cycle for a motion picture is 7 years from theatrical release. Approximately 90% of any revenues are received within the first 18-24 months after release.

DEEP ECHO

THE PROJECT

DEEP ECHO is a futuristic Sci-Fi/Drama film set in the bottom of the Atlantic ocean, where the lines of time and space are broken to discover a message destined to save us all.

DEEP ECHO

LOGLINE



A fearless scientist investigates the ruins of a mysterious pyramid hidden in the bottom of the ocean but gets trapped in her flooded artificial intelligence capsule. While trying to survive, she makes the greatest of human discoveries.

DEEP ECHO

SYNOPSIS

It's the year 2044. 100 feet below the surface, marine archaeologist/acoustics expert KAT examines a plaque on the sea floor dedicated to her special needs son LIAM (10) who died 2 years ago. She then explores a cave with charming fellow diver ORSON. They find steps which lead to a chamber that contains a skeleton on a shore, hunched near a hexagon formed by stones, that surround a monolith. Kat removes her helmet and speaks, causing a piercing echo that nearly kills her, until Orson saves her life.

She presents her findings at the Maritime Archaeology Institute with hopes of further exploring the cave, but they are unhappy she didn't assess the elevated CO2 levels before removing her helmet and cut her funding. Kat is devastated until she's approached by HERMAN, founder of "Exegeseas," an undersea research and exploration company. Herman tells Kat that they have made a similar discovery – an ancient structure 800 feet below the surface, emitting an ultrasonic frequency that comes from another 800 feet below it.

Click here to read [TREATMENT](#)

DEEP ECHO

CHARACTERS



Donnie Yen

In consideration as

Orson Avery

He is a charming and brilliant underwater research scientist, and a member of the board of directors of Exegeseas (a powerful institution for Oceanology). He is Kat's partner and a key element in her team. Orson saves Kat from near death in an extremely dangerous expedition [Donnie's IMDB](#)



Magi Avila

as Kat Winters

The world's leading marine archaeologist/acoustics expert. She trusts more in machinery than in human beings. Kat is sarcastic, brilliant, adept, and brave. She is a quick thinker in dangerous situations and obsesses with her work as a mechanism to cope with the death of her 10-year-old child, LIAM. She explores the deep oceans and makes the biggest discoveries of the century. [Magi's IMDB](#)



Nicolas Cage

In consideration as

Herman Hayes

Fatherly, his word is his bond. Herman is the head of Exegeseas, and shares Kat's passion for deep ocean discoveries. **Herman** knows there is no one in the world with her underwater archaeoacoustics expertise for this exploration and is willing to give her a blank check for her expeditions. He has created the most advanced Submersible in the world. [Nic's IMDB](#)

CAST CONSIDERATIONS



Paul Rae

Cast as Suit

Speaker for the board of directors at Exegeseas, the most powerful underwater research center in the world. He pauses Kat's underwater expedition until they decide when it is wise to share her discovery with humanity. [Paul's IMDB](#)



Liam Seja

*In consideration as
Liam*

Before death, he was unassuming, innocent, friendly, polite, artistic and enjoyed drawing and sculpturing. He was fascinated by the galaxies and the ocean. Liam dies at the hands of bullies and his body gets lost in the ocean. After death he became comforting and wise. He comes to his dying mother, Kat, to tell her that she cannot die yet ; Kat must continue her ocean explorations as she is so close to finding the greatest discovery in human history and gives her clues for it. [Liam's IMDB](#)



Ian Harvie

*In consideration as
Otis –The AI*

The module's A.I. system. He is the most advanced A.I. ever invented, capable of rendering images of Kat's conscious and unconscious memories and thoughts in real time, and he watches out for Kat's needs. Otis is also humorous, caring, and understanding. He wants to have a deeper understanding of humans.

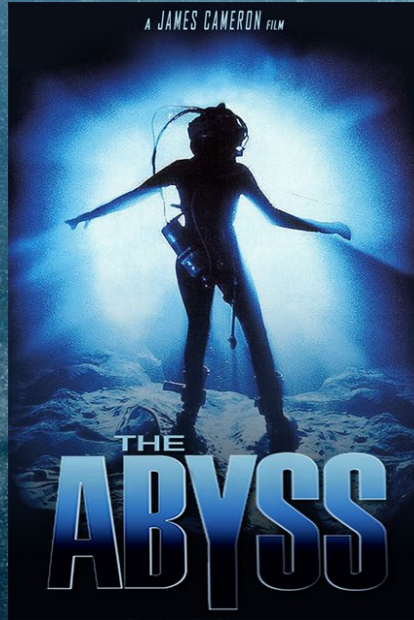
DEEP ECHO

COMPARABLES

FINANCIAL TABLES

INCOME PROJECTIONS FOR THE FOLOWING 5 YEARS [LINK TO BE HERE](#)

CASH FLOW PROJECTIONS [LINK TO BE HERE](#)



While there is a huge difference between DEEP ECHO and these film's budgets, the similarities that have proven to captivate the audience are masterfully integrated in this script. Smartly making it into a film that is artistically and technically possible to execute in a truly powerful way.

“Gravity was so expensive due to the actors being fully immersed in VFX scenes the entire movie. In DEEP ECHO, the vast majority of VFX happens outside the submersible. Actors are set -in reality, on sets most of the time.” ~Chris Wells - VFX Supervisor

DEEP ECHO

WHY DEEP ECHO NOW?

Amid the crisis of climate change; the oceans are critical to the survival of the planet providing great opportunity for renewal energy. In DEEP ECHO ancient cultures also remind us that science, love, and family are forces that keep our species alive. Also, that rather than equal pay, a blank check for highly skilled females is overdue. Deep Echo is timeless as it inspires us to search deep to access the infinite power that lies within ourselves.

Magi Avila

Chief Executive Officer

Kepler 22 Group LLC

info@kepler22group.com

C: 323.833.8761